

Preparation unit—Accessories



GV Series soft-start valve

Specification

Model	GV200-	GV200-08	GV300-08	GV300-10	GV300-15	GV400-10	GV400-15
Fluid	Air						
Port size	1/8"	1/4"	1/4"	3/8"	1/2"	3/8"	1/2"
Pressure range	0.25~0.9MPa(35~130Psi)						
Proof pressure	1.5 MPa(215Psi)						
Temperature range	-20~70°C						
Acting type	Solenoid control						
Exhaust port size	1/4"		3/8"			1/2"	
Power connection	Terminal, Grommet						
Standard voltage	AC220V、110V、24V(50/60Hz); DC12V、24V						
Voltage range	-15%~+10%						
Insulation	Class B						
Power consumption	AC: 3.5VA; DC: 2.5W						
Option pressure gauge	F: Square pressure gauge; C: Circular pressure gauge						
Suitable F.R.L type	GC200-06	GC200-08	GC300-08	GC300-10	GC300-15	GC400-10	GC400-15

Ordering code

GV300 — 10 — □ F 1 — A — T

Pressure gauge shape
F: Square
C: Circular

Voltage
A: AC220V(50/60Hz)
B: DC24V
C: AC110V(50/60Hz)
E: AC24V(50/60Hz)
F: DC12V

Model
GV200: 200 Series Soft start-up valve
GV300: 300 Series Soft start-up valve
GV400: 400 Series Soft start-up valve

Port size
06: 1/8"
08: 1/4"
10: 3/8"
15: 1/2"

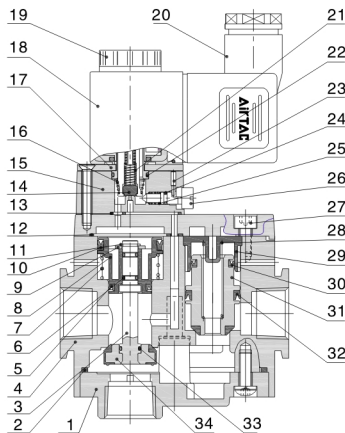
Pressure gauge
Blank: Pressure gauge
N: No pressure gauge

Scale
1: MPa
2: psi
3: bar

Thread
T: NPT
G: G

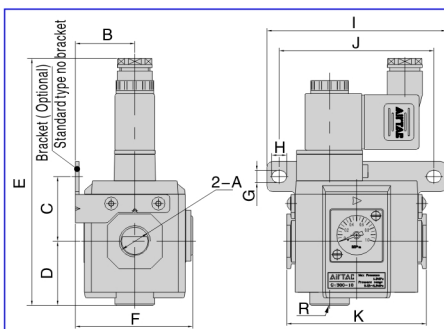
Note: When it is used with F.R.L. combination, extra mounting bracket is needed. Please refer to P II - 18 for order detail.

Inner structure



NO.	Item	NO.	Item
1	Bottom cover	18	Coil set
2	Gasket	19	Nut
3	Spool	20	Connector
4	Body	21	Spring
5	O-ring	22	O-ring
6	O-ring	23	Manual override block
7	Spring	24	O-ring
8	Inlet piston	25	Spring
9	Piston gasket	26	Manual override
10	O-ring	27	Fixed screw
11	Snap ring	28	Spring
12	Gasket	29	Valve cover
13	Gasket	30	O-ring
14	Gasket	31	Valve spool
15	Pilot kit	32	O-ring
16	Spring	33	O-ring
17	Fixed plate	34	Inlet plug

Dimensions

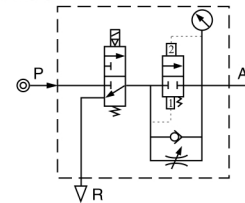


Item/Model	GV200		GV300		GV400		
	06	08	08	10	15	10	15
A	1/8"	1/4"	1/4"	3/8"	1/2"	3/8"	1/2"
B	24.5		31.5		40.5		
C	30.5		34.5		39		
D	30		34		40.5		
E	123.5		131		142.5		
F	57		62.5		80		
G	5.5		6.5		8.5		
H	8		8		11		
I	80		95		120		
J	67		82		102		
K	59		74		90		
R	1/4"		3/8"		1/2"		



GV

Symbol



Product feature

Soft start-up valve is used to input compressed air into pneumatic system slowly and has the effect of safety and protection. Air intake is connected with the input P of Soft start-up valve. If coil is energized, the 3/2 way valve opens. At this time, a little air comes to output A through throttle valve, which increases the pressure of the system gradually; when the output pressure is equal the half of the input pressure, Soft start-up valve completely opens and the flow at this time reaches the highest value of itself. When the coil is de-energized, air intake P closes, the air returns to R orifice through reflux valve and is quickly exhausted. The pressure of the system falls to zero, which protects the whole system.

Attention

Manually adjust the "+" and "-" throttle screw at the bottom of the soft start-up valve as per the requirement of start speed. It shall go slowly, other wise sudden acting of the product or system shall be caused with a heavy impact.

